



75  
%34.1 %29 %32.0  
%1.8 17-0 %1.5  
. %1.3

%33.6 75 %31.4  
17 -0 %1.5  
. %1.4 %1.6

113 •

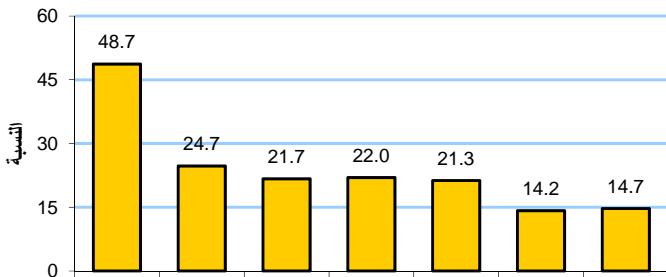
2011 •

%4.1  
%1.4 .%3.6

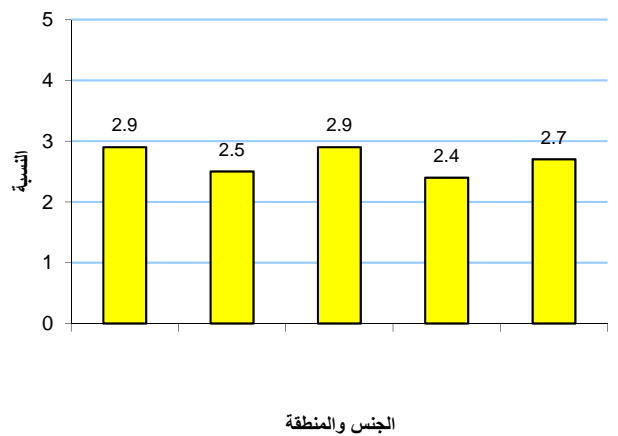
%2.5  
%2.4 %2.2

%49  
%49.5  
%24.7  
%26.7 %47.2  
%23.6

توزيع الأفراد ذوي الإعاقة حسب نوع الإعاقة، 2011



نسبة الأفراد ذوي الإعاقة حسب الجنس والمنطقة، 2011



				/	%43.7
	%13.0		%42.9	%29.1	
		.%9.7	%27.6		%28.7
					%27.2
				.%33.6	
18		%54.7			
					<b>18</b>
	%60.4				%8.7
			%9.5		
					%7.7
		%40.3			%76.4
				%75.5	
		%42.9			%78.1
	%48.4				%34.2
				%32.1	
					%38.4
					%22.2
				%23.2	
				%21.7	%19.4
					%22.9
(970/972) 02-2982700:					
(970/972) 02- 2982710 :					
1800300300 :					%74.4
<a href="mailto:diwan@pcbs.gov.ps">diwan@pcbs.gov.ps</a> :					
					%67.2
			%25.0		%26.9
			%79.4		
					%65.6